

Janice Hartwell
October 24, 2009

I have been honored to serve on the Artist's Steering Committee of the Board of Directors for the Florida Museum of Women in the Arts for the past several years. Seeing this Museum come into being is very rewarding for every one of us however small or large our part we have in the inception.

Morgan Lewis, Leslie Puckett and myself, Janice Hartwell, put in weeks of work reviewing the 225 artists who submitted art works for this inaugural exhibition. Given that all three of us had juried many art exhibitions in our long careers, the jury process went amicably and smoothly. We accepted works by 38 artists representing varied media and styles, looking for the best works in each discipline. As with most juried exhibitions, there are works that will satisfy or challenge the viewer depending upon their knowledge of contemporary art. In this exhibition we have new and emerging artists exhibiting along side of mature artists, indicative of the wide range of work submitted and the wide range of talented artists. We hope you will come away from the exhibition with an increased awareness and appreciation for the creative efforts of women artists within the State of Florida.

Jurors' Statement

including versions of Lorem Ipsum.

containing Lorem Ipsum passages, and more recently with desktop publishing software like Aldus PageMaker including versions of Lorem Ipsum.

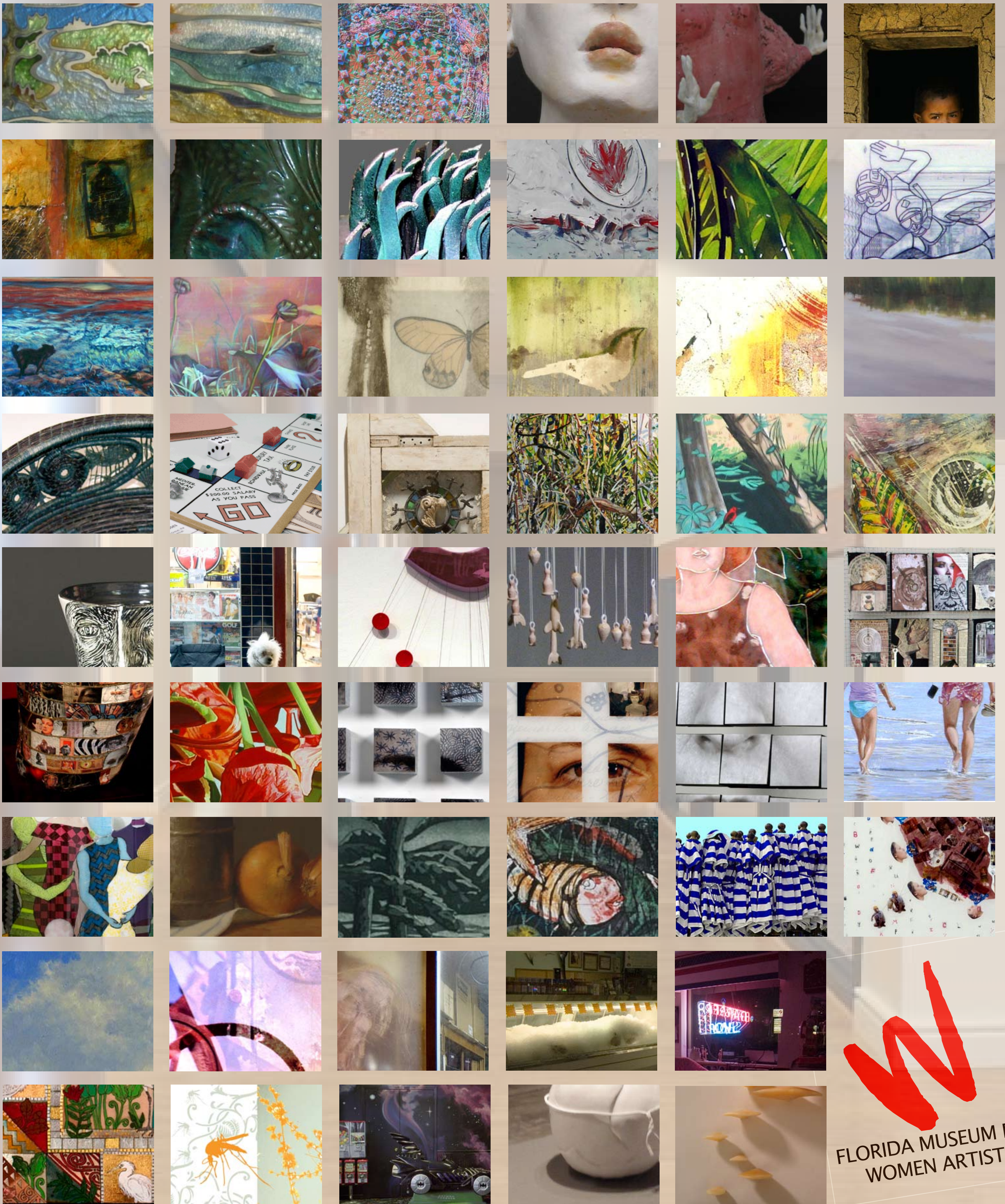
setting, remaining essentially unchanged. It was popularised in the 1960s with the release of Letraset sheets containing Lorem Ipsum passages, and more recently with desktop publishing software like Aldus PageMaker including versions of Lorem Ipsum.

it to make a type specimen book. It has survived not only five centuries, but also the leap into electronic type-try's standard dummy text ever since the 1500s, when an unknown printer took a galley of type and scrambled it to make a type specimen book. It has survived not only five centuries, but also the leap into electronic type-try's standard dummy text ever since the 1500s, when an unknown printer took a galley of type and scrambled it to make a type specimen book. It has survived not only five centuries, but also the leap into electronic type-try's standard dummy text ever since the 1500s, when an unknown printer took a galley of type and scrambled it to make a type specimen book. It has survived not only five centuries, and more recently with desktop publishing software like Aldus PageMaker including versions of Lorem Ipsum.

President's Statement

including versions of Lorem Ipsum.

M. K. Foltz, St. Petersburg From the Parallel Cultures series: The extent of the power archival pigment ink print on Hanemuhle paper.	Kristin Anderson, Apalachicola Water Wars and Dawn Beach Walk sterling silver, vitreous transparent enamel
Lesley Nolan, Tallahassee Warm Up fused glass	Beth Appleton, Saint George Island Hurricane Dennis: Back Dive watercolor/cut paper assemblage
Terry Trambauer Norris, Mims Camellias on Red oil on linen panel	Barbara Balzer, Tallahassee Leda and the Swan and The Red Queen ceramic
Florence Putterman, Sarasota Nocturnal Encounter and Encounter at Sea etching on paper	Connie Bransilver Barrow World View - Madagascar photograph, archival giclee print on canvas
Florence Roghaar, Boca Raton Umbrella Rorschach photograph	Donne Bitner, Orlando Repercussions mixed media
Becki Rutta, Tallahassee The Twelve Winds acrylic transfers and paint on China silk	Terrie Corbett, Tallahassee Gypsy Spirit painting in kiln-fired glass using high fire enamels
Jean Goddeau, West Palm Beach Stonehenge batik on rice paper	Joelle Dietrick, Tallahassee Thin Cites: Underwater Hockey (x4) ink and acrylic on vellum
Francie Bishop Good, Fort Lauderdale Halo, Las Olas Blvd, Ft. Lauderdale, FL chromogenic print	Jaimie Cordero, Fincrest Surround Sound watercolor on paper
Julie Guyot, Tallahassee Grandma Saves the World Part I ceramic, thread, pins, spray paint, laser decal	Holly Hanesian, Tallahassee Evermore porcelain with encaustic, ribbons and monofilament
Mary Klein, St. Petersburg Beach Sheena of the Jungle cloisonné enamel on copper	Emily Arthur Douglass, Jacksonville Dark Bird and Moth sugar-lift etching and chine colle on gampi tissue paper
Grace Leal, Cocoa Beach Fragmented Time 3 mixed media collages on tar paper, mounted on hardware cloth	Betina Edwards, Bonita Springs Whitwind photography
Charity Wood, Tallahassee Heat and Mosquitos digital collage	Mary Erickson, Venice Storm Light oil on panel
M. Laine Wyatt, Deland Roller Rink, Pascagoula, MS archival digital inkjet print	Kathryn Erickson, Punta Gorda Phantom Fish reed and agate
Valeria Yamamoto, Miami Beach Wall-Fungus onyx and plaster and FGR-95	Luisa Mesa, Miami Beach Journey Within 2 and Fragments of Memory 3 mixed media on wood and acrylic
Joan Brechin Sonnenburg, Naples Underwater Icons mixed medium on canvas	Luiza Mesa, Miami Beach Interior Series #6 acrylic
Jennifer M. Surgent, Daytona Beach Night Window 1, 3 and 5 digital photography	Luiza Mesa, Miami Beach Camatton Series: Petal, Bud, Stems plaster and FGR-95
Joan Brechin Sonnenburg, Naples Underwater Icons mixed medium on canvas	
Jacquelyn Modest Schindehette, Ocala Up, Up and Away oil	
Joan Brechin Sonnenburg, Naples Underwater Icons mixed medium on canvas	
Jennifer M. Surgent, Daytona Beach Night Window 1, 3 and 5 digital photography	
Kathy Wilcox, Tallahassee Florida Quilt - Egret enamel glass fused to copper	
Charity Wood, Tallahassee Heat and Mosquitos digital collage	
M. Laine Wyatt, Deland Roller Rink, Pascagoula, MS archival digital inkjet print	
Valeria Yamamoto, Miami Beach Wall-Fungus onyx and plaster and FGR-95	
Luisa Mesa, Miami Beach Journey Within 2 and Fragments of Memory 3 mixed media on wood and acrylic	
Kathryn Erickson, Punta Gorda Phantom Fish reed and agate	
Mary Erickson, Venice Storm Light oil on panel	
Betina Edwards, Bonita Springs Whitwind photography	
Emily Arthur Douglass, Jacksonville Dark Bird and Moth sugar-lift etching and chine colle on gampi tissue paper	
Beth Appleton, Saint George Island Hurricane Dennis: Back Dive watercolor/cut paper assemblage	
Barbara Balzer, Tallahassee Leda and the Swan and The Red Queen ceramic	
Connie Bransilver Barrow World View - Madagascar photograph, archival giclee print on canvas	
Donne Bitner, Orlando Repercussions mixed media	
Terrie Corbett, Tallahassee Gypsy Spirit painting in kiln-fired glass using high fire enamels	
Joelle Dietrick, Tallahassee Thin Cites: Underwater Hockey (x4) ink and acrylic on vellum	
Jaimie Cordero, Fincrest Surround Sound watercolor on paper	
Holly Hanesian, Tallahassee Evermore porcelain with encaustic, ribbons and monofilament	
Julie Guyot, Tallahassee Grandma Saves the World Part I ceramic, thread, pins, spray paint, laser decal	
Francie Bishop Good, Fort Lauderdale Halo, Las Olas Blvd, Ft. Lauderdale, FL chromogenic print	
Julie Guyot, Tallahassee Grandma Saves the World Part I ceramic, thread, pins, spray paint, laser decal	
Donne Bitner, Orlando Repercussions mixed media	
Terrie Corbett, Tallahassee Gypsy Spirit painting in kiln-fired glass using high fire enamels	
Joelle Dietrick, Tallahassee Thin Cites: Underwater Hockey (x4) ink and acrylic on vellum	
Jaimie Cordero, Fincrest Surround Sound watercolor on paper	
Holly Hanesian, Tallahassee Evermore porcelain with encaustic, ribbons and monofilament	
Emily Arthur Douglass, Jacksonville Dark Bird and Moth sugar-lift etching and chine colle on gampi tissue paper	
Beth Appleton, Saint George Island Hurricane Dennis: Back Dive watercolor/cut paper assemblage	
Barbara Balzer, Tallahassee Leda and the Swan and The Red Queen ceramic	
Connie Bransilver Barrow World View - Madagascar photograph, archival giclee print on canvas	
Donne Bitner, Orlando Repercussions mixed media	
Terrie Corbett, Tallahassee Gypsy Spirit painting in kiln-fired glass using high fire enamels	
Joelle Dietrick, Tallahassee Thin Cites: Underwater Hockey (x4) ink and acrylic on vellum	
Jaimie Cordero, Fincrest Surround Sound watercolor on paper	
Holly Hanesian, Tallahassee Evermore porcelain with encaustic, ribbons and monofilament	
Julie Guyot, Tallahassee Grandma Saves the World Part I ceramic, thread, pins, spray paint, laser decal	
Francie Bishop Good, Fort Lauderdale Halo, Las Olas Blvd, Ft. Lauderdale, FL chromogenic print	
Julie Guyot, Tallahassee Grandma Saves the World Part I ceramic, thread, pins, spray paint, laser decal	
Donne Bitner, Orlando Repercussions mixed media	
Terrie Corbett, Tallahassee Gypsy Spirit painting in kiln-fired glass using high fire enamels	
Joelle Dietrick, Tallahassee Thin Cites: Underwater Hockey (x4) ink and acrylic on vellum	
Jaimie Cordero, Fincrest Surround Sound watercolor on paper	
Holly Hanesian, Tallahassee Evermore porcelain with encaustic, ribbons and monofilament	
Emily Arthur Douglass, Jacksonville Dark Bird and Moth sugar-lift etching and chine colle on gampi tissue paper	
Beth Appleton, Saint George Island Hurricane Dennis: Back Dive watercolor/cut paper assemblage	
Barbara Balzer, Tallahassee Leda and the Swan and The Red Queen ceramic	
Connie Bransilver Barrow World View - Madagascar photograph, archival giclee print on canvas	
Donne Bitner, Orlando Repercussions mixed media	
Terrie Corbett, Tallahassee Gypsy Spirit painting in kiln-fired glass using high fire enamels	
Joelle Dietrick, Tallahassee Thin Cites: Underwater Hockey (x4) ink and acrylic on vellum	
Jaimie Cordero, Fincrest Surround Sound watercolor on paper	
Holly Hanesian, Tallahassee Evermore porcelain with encaustic, ribbons and monofilament	
Emily Arthur Douglass, Jacksonville Dark Bird and Moth sugar-lift etching and chine colle on gampi tissue paper	
Beth Appleton, Saint George Island Hurricane Dennis: Back Dive watercolor/cut paper assemblage	
Barbara Balzer, Tallahassee Leda and the Swan and The Red Queen ceramic	
Connie Bransilver Barrow World View - Madagascar photograph, archival giclee print on canvas	
Donne Bitner, Orlando Repercussions mixed media	
Terrie Corbett, Tallahassee Gypsy Spirit painting in kiln-fired glass using high fire enamels	
Joelle Dietrick, Tallahassee Thin Cites: Underwater Hockey (x4) ink and acrylic on vellum	
Jaimie Cordero, Fincrest Surround Sound watercolor on paper	
Holly Hanesian, Tallahassee Evermore porcelain with encaustic, ribbons and monofilament	
Emily Arthur Douglass, Jacksonville Dark Bird and Moth sugar-lift etching and chine colle on gampi tissue paper	
Beth Appleton, Saint George Island Hurricane Dennis: Back Dive watercolor/cut paper assemblage	
Barbara Balzer, Tallahassee Leda and the Swan and The Red Queen ceramic	
Connie Bransilver Barrow World View - Madagascar photograph, archival giclee print on canvas	
Donne Bitner, Orlando Repercussions mixed media	
Terrie Corbett, Tallahassee Gypsy Spirit painting in kiln-fired glass using high fire enamels	
Joelle Dietrick, Tallahassee Thin Cites: Underwater Hockey (x4) ink and acrylic on vellum	
Jaimie Cordero, Fincrest Surround Sound watercolor on paper	
Holly Hanesian, Tallahassee Evermore porcelain with encaustic, ribbons and monofilament	
Emily Arthur Douglass, Jacksonville Dark Bird and Moth sugar-lift etching and chine colle on gampi tissue paper	
Beth Appleton, Saint George Island Hurricane Dennis: Back Dive watercolor/cut paper assemblage	
Barbara Balzer, Tallahassee Leda and the Swan and The Red Queen ceramic	
Connie Bransilver Barrow World View - Madagascar photograph, archival giclee print on canvas	
Donne Bitner, Orlando Repercussions mixed media	
Terrie Corbett, Tallahassee Gypsy Spirit painting in kiln-fired glass using high fire enamels	
Joelle Dietrick, Tallahassee Thin Cites: Underwater Hockey (x4) ink and acrylic on vellum	
Jaimie Cordero, Fincrest Surround Sound watercolor on paper	
Holly Hanesian, Tallahassee Evermore porcelain with encaustic, ribbons and monofilament	
Emily Arthur Douglass, Jacksonville Dark Bird and Moth sugar-lift etching and chine colle on gampi tissue paper	
Beth Appleton, Saint George Island Hurricane Dennis: Back Dive watercolor/cut paper assemblage	
Barbara Balzer, Tallahassee Leda and the Swan and The Red Queen ceramic	
Connie Bransilver Barrow World View - Madagascar photograph, archival giclee print on canvas	
Donne Bitner, Orlando Repercussions mixed media	
Terrie Corbett, Tallahassee Gypsy Spirit painting in kiln-fired glass using high fire enamels	
Joelle Dietrick, Tallahassee Thin Cites: Underwater Hockey (x4) ink and acrylic on vellum	
Jaimie Cordero, Fincrest Surround Sound watercolor on paper	
Holly Hanesian, Tallahassee Evermore porcelain with encaustic, ribbons and monofilament	
Emily Arthur Douglass, Jacksonville Dark Bird and Moth sugar-lift etching and chine colle on gampi tissue paper	
Beth Appleton, Saint George Island Hurricane Dennis: Back Dive watercolor/cut paper assemblage	
Barbara Balzer, Tallahassee Leda and the Swan and The Red Queen ceramic	
Connie Bransilver Barrow World View - Madagascar photograph, archival giclee print on canvas	
Donne Bitner, Orlando Repercussions mixed media	
Terrie Corbett, Tallahassee Gypsy Spirit painting in kiln-fired glass using high fire enamels	
Joelle Dietrick, Tallahassee Thin Cites: Underwater Hockey (x4) ink and acrylic on vellum	
Jaimie Cordero, Fincrest Surround Sound watercolor on paper	
Holly Hanesian, Tallahassee Evermore porcelain with encaustic, ribbons and monofilament	
Emily Arthur Douglass, Jacksonville Dark Bird and Moth sugar-lift etching and chine colle on gampi tissue paper	
Beth Appleton, Saint George Island Hurricane Dennis: Back Dive watercolor/cut paper assemblage	
Barbara Balzer, Tallahassee Leda and the Swan and The Red Queen ceramic	
Connie Bransilver Barrow World View - Madagascar photograph, archival giclee print on canvas	
Donne Bitner, Orlando Repercussions mixed media	
Terrie Corbett, Tallahassee Gypsy Spirit painting in kiln-fired glass using high fire enamels	
Joelle Dietrick, Tallahassee Thin Cites: Underwater Hockey (x4) ink and acrylic on vellum	
Jaimie Cordero, Fincrest Surround Sound watercolor on paper	
Holly Hanesian, Tallahassee Evermore porcelain with encaustic, ribbons and monofilament	
Emily Arthur Douglass, Jacksonville Dark Bird and Moth sugar-lift etching and chine colle on gampi tissue paper	
Beth Appleton, Saint George Island Hurricane Dennis: Back Dive watercolor/cut paper assemblage	
Barbara Balzer, Tallahassee Leda and the Swan and The Red Queen ceramic	
Connie Bransilver Barrow World View - Madagascar photograph, archival giclee print on canvas	
Donne Bitner, Orlando Repercussions mixed media	
Terrie Corbett, Tallahassee Gypsy Spirit painting in kiln-fired glass using high fire enamels	
Joelle Dietrick, Tallahassee Thin Cites: Underwater Hockey (x4) ink and acrylic on vellum	
Jaimie Cordero, Fincrest Surround Sound watercolor on paper	
Holly Hanesian, Tallahassee Evermore porcelain with encaustic, ribbons and monofilament	
Emily Arthur Douglass, Jacksonville Dark Bird and Moth sugar-lift etching and chine colle on gampi tissue paper	
Beth Appleton, Saint George Island Hurricane Dennis: Back Dive watercolor/cut paper assemblage	
Barbara Balzer, Tallahassee Leda and the Swan and The Red Queen ceramic	
Connie Bransilver Barrow World View - Madagascar photograph, archival giclee print on canvas	
Donne Bitner, Orlando Repercussions mixed media	
Terrie Corbett, Tallahassee Gypsy Spirit painting in kiln-fired glass using high fire enamels	
Joelle Dietrick, Tallahassee Thin Cites: Underwater Hockey (x4) ink and acrylic on vellum	
Jaimie Cordero, Fincrest Surround Sound watercolor on paper	
Holly Hanesian, Tallahassee Evermore porcelain with encaustic, ribbons and monofilament	
Emily Arthur Douglass, Jacksonville Dark Bird and Moth sugar-lift etching and chine colle on gampi tissue paper	
Beth Appleton, Saint George Island Hurricane Dennis: Back Dive watercolor/cut paper assemblage	
Barbara Balzer, Tallahassee Leda and the Swan and The Red Queen ceramic	
Connie Bransilver Barrow World View - Madagascar photograph, archival giclee print on canvas	
Donne Bitner, Orlando Repercussions mixed media	
Terrie Corbett, Tallahassee Gypsy Spirit painting in kiln-fired glass using high fire enamels	
Joelle Dietrick, Tallahassee Thin Cites: Underwater Hockey (x4) ink and acrylic on vellum	
Jaimie Cordero, Fincrest Surround Sound watercolor on paper	
Holly Hanesian, Tallahassee Evermore porcelain with encaustic, ribbons and monofilament	
Emily Arthur Douglass, Jacksonville Dark Bird and Moth sugar-lift etching and chine colle on gampi tissue paper	
Beth Appleton, Saint George Island Hurricane Dennis: Back Dive watercolor/cut paper assemblage	
Barbara Balzer, Tallahassee Leda and the Swan and The Red Queen ceramic	
Connie Bransilver Barrow World View - Madagascar photograph, archival giclee print on canvas	
Donne Bitner, Orlando Repercussions mixed media	
Terrie Corbett, Tallahassee Gypsy Spirit painting in kiln-fired glass using high fire enamels	
Joelle Dietrick, Tallahassee Thin Cites: Underwater Hockey (x4) ink and acrylic on vellum	
Jaimie Cordero, Fincrest Surround Sound watercolor on paper	
Holly Hanesian, Tallahassee Evermore porcelain with encaustic, ribbons and monofilament	
Emily Arthur Douglass, Jacksonville Dark Bird and Moth sugar-lift etching and chine colle on gampi tissue paper	
Beth Appleton, Saint George Island Hurricane Dennis: Back Dive watercolor/cut paper assemblage	
Barbara Balzer, Tallahassee Leda and the Swan and The Red Queen ceramic	
Connie Bransilver Barrow World View - Madagascar photograph, archival giclee print on canvas	
Donne Bitner, Orlando Repercussions mixed media	
Terrie Corbett, Tallahassee Gypsy Spirit painting in kiln-fired glass using high fire enamels	
Joelle Dietrick, Tallahassee Thin Cites: Underwater Hockey (x4) ink and acrylic on vellum	
Jaimie Cordero, Fincrest Surround Sound watercolor on paper	
Holly Hanesian, Tallahassee Evermore porcelain with encaustic, ribbons and monofilament	
Emily Arthur Douglass, Jacksonville Dark Bird and Moth sugar-lift etching and chine colle on gampi tissue paper	
Beth Appleton, Saint George Island Hurricane Dennis: Back Dive watercolor/cut paper assemblage	
Barbara Balzer, Tallahassee Leda and the Swan and The Red Queen ceramic	
Connie Bransilver Barrow World View - Madagascar photograph, archival giclee print on canvas	
Donne Bitner, Orlando Repercussions mixed media	
Terrie Corbett, Tallahassee Gypsy Spirit painting in kiln-fired glass using high fire enamels	
Joelle Dietrick, Tallahassee Thin Cites: Underwater Hockey (x4) ink and acrylic on vellum	
Jaimie Cordero, Fincrest Surround Sound watercolor on paper	
Holly Hanesian, Tallahassee Evermore porcelain with encaustic, ribbons and monofilament	
Emily Arthur Douglass, Jacksonville Dark Bird and Moth sugar-lift etching and chine colle on gampi tissue paper	
Beth Appleton, Saint George Island Hurricane Dennis: Back Dive watercolor/cut paper assemblage	
Barbara Balzer, Tallahassee Leda and the Swan and The Red Queen ceramic	
Connie Bransilver Barrow World View - Madagascar photograph, archival giclee print on canvas	
Donne Bitner, Orlando Repercussions mixed media	
Terrie Corbett, Tallahassee Gypsy Spirit painting in kiln-fired glass using high fire enamels	
Joelle Dietrick, Tallahassee Thin Cites: Underwater Hockey (x4) ink and acrylic on vellum	
Jaimie Cordero, Fincrest Surround Sound watercolor on paper	
Holly Hanesian, Tallahassee Evermore porcelain with encaustic, ribbons and monofilament	
Emily Arthur Douglass, Jacksonville Dark Bird and Moth sugar-lift etching and chine colle on gampi tissue paper	
Beth Appleton, Saint George Island Hurricane Dennis: Back Dive watercolor/cut paper assemblage	
Barbara Balzer, Tallahassee Leda and the Swan and The Red Queen ceramic	
Connie Bransilver Barrow World View - Madagascar photograph, archival giclee print on canvas	
Donne Bitner, Orlando Repercussions mixed media	
Terrie Corbett, Tallahassee Gypsy Spirit painting in kiln-fired glass using high fire enamels	
Joelle Dietrick, Tallahassee Thin Cites: Underwater Hockey (x4) ink and acrylic on vellum	
Jaimie Cordero, Fincrest Surround Sound watercolor on paper	
Holly Hanesian, Tallahassee Evermore porcelain with encaustic, ribbons and monofilament	
Emily Arthur Douglass, Jacksonville Dark Bird and Moth sugar-lift etching and chine colle on gampi tissue paper	
Beth Appleton, Saint George Island Hurricane Dennis: Back Dive watercolor/cut paper assemblage	
Barbara Balzer, Tallahassee Leda and the Swan and The Red Queen ceramic	
Connie Bransilver Barrow World View - Madagascar photograph, archival giclee print on canvas	
Donne Bitner, Orlando Repercussions mixed media	
Terrie Corbett, Tallahassee Gypsy Spirit painting in kiln-fired glass using high fire enamels	
Joelle Dietrick, Tallahassee Thin Cites: Underwater Hockey (x4) ink and acrylic on vellum	
Jaimie Cordero, Fincrest Surround Sound watercolor on paper	
Holly Hanesian, Tallahassee Evermore porcelain with encaustic, ribbons and monofilament	
Emily Arthur Douglass, Jacksonville Dark Bird and Moth sugar-lift etching and chine colle on gampi tissue paper	
Beth Appleton, Saint George Island Hurricane Dennis: Back Dive watercolor/cut paper assemblage	
Barbara Balzer, Tallahassee Leda and the Swan and The Red Queen ceramic	
Connie Bransilver Barrow World View - Madagascar photograph, archival giclee print on canvas	
Donne Bitner, Orlando Repercussions mixed media	
Terrie Corbett, Tallahassee Gypsy Spirit painting in kiln-fired glass using high fire enamels	
Joelle Dietrick, Tallahassee Thin Cites: Underwater Hockey (x4) ink and acrylic on vellum	
Jaimie Cordero, Fincrest Surround Sound watercolor on paper	
Holly Hanesian, Tallahassee Evermore porcelain with encaustic, ribbons and monofilament	
Emily Arthur Douglass, Jacksonville Dark Bird and Moth sugar-lift etching and chine colle on gampi tissue paper	
Beth Appleton, Saint George Island Hurricane Dennis: Back Dive watercolor/cut paper assemblage	
Barbara Balzer, Tallahassee Leda and the Swan and The Red Queen ceramic	
Connie Bransilver Barrow World View - Madagascar photograph, archival giclee print on canvas	
Donne Bitner, Orlando Repercussions mixed media	
Terrie Corbett, Tallahassee Gypsy Spirit painting in kiln-fired glass using high fire enamels	
Joelle Dietrick, Tallahassee Thin Cites: Underwater Hockey (x4) ink and acrylic on vellum	
Jaimie Cordero, Fincrest Surround Sound watercolor on paper	
Holly Hanesian, Tallahassee Evermore porcelain with encaustic, ribbons and monofilament	
Emily Arthur Douglass, Jacksonville Dark Bird and Moth sugar-lift etching and chine colle on gampi tissue paper	
Beth Appleton, Saint George Island Hurricane Dennis: Back Dive watercolor/cut paper assemblage	
Barbara Balzer, Tallahassee Leda and the Swan and The Red Queen ceramic	
Connie Bransilver Barrow World View - Madagascar photograph, archival giclee print on canvas	
Donne Bitner, Orlando Repercussions mixed media	
Terrie Corbett, Tallahassee Gypsy Spirit painting in kiln-fired glass using high fire enamels	
Joelle Dietrick, Tallahassee Thin Cites: Underwater Hockey (x4) ink and acrylic on vellum	
Jaimie Cordero, Fincrest Surround Sound watercolor on paper	
Holly Hanesian, Tallahassee Evermore porcelain with encaustic, ribbons and monofilament	
Emily Arthur Douglass, Jacksonville Dark Bird and Moth sugar-lift etching and chine colle on gampi tissue paper	
Beth Appleton, Saint George Island Hurricane Dennis: Back Dive watercolor/cut paper assemblage	
Barbara Balzer, Tallahassee Leda and the Swan and The Red Queen ceramic	
Connie Bransilver Barrow	



Inaugural Exhibition

November 14, 2009 - February 14, 2010